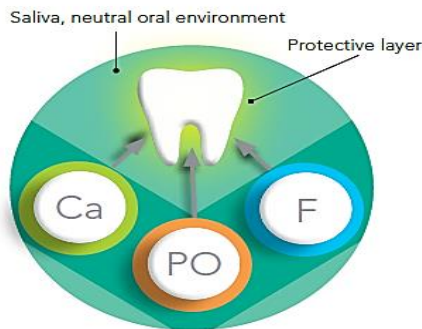


REMINERALISATION OF TEETH

MI FLOURIDE VARNISH

With MI Varnish

Fluoride, calcium and phosphate combine and form a strong protective coating. The neutral pH of 6,6 enhances enamel acid resistance and inhibits demineralisation.



Smooth, translucent and easy to use



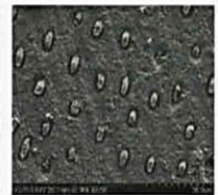
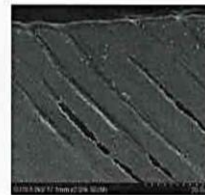
Exposed root surfaces and sensitivity reported by patient were coated with MI Varnish™



MI Varnish™ application completed and sensitivity was markedly reduced

Prof Ian Meyers, Australia

Penetrates and seals dentinal tubules to relieve hypersensitivity



Prevents hypersensitivity in various clinical situations



Cervical areas



After professional



Occlusal wear



MIH

Clinical application



1. Dry the tooth surfaces before application of MI Varnish™.
2. Peel the foil lid off the MI Varnish™ unit dose and stir through.
3. Apply a thin, uniform layer of MI Varnish™ using a disposable brush.
4. MI Varnish™ sets when in contact with water or saliva.
5. MI Varnish™ should remain undisturbed on the teeth for 4 hours. Instruct patients to avoid hard, hot or sticky foods, tooth brushing and flossing, products containing alcohol (oral rinses, beverages etc.) during this time period.



Dr. Esra Can, Turkey



In office

Professional application of MI Varnish at intervals, determined by indication and patient needs.



At home

Daily application of Tooth Mousse or MI Paste Plus provides continued remineralisation and caries protection

Mount Elizabeth Orthodontic Clinic

3 Mount Elizabeth #10-03 Mount Elizabeth Medical Centre Singapore 228510
Email: meoc@braces.com.sg Website: www.braces.com.sg Tel: 63272237 (ME-BRACES)